

REGENT'S VIEW

ON THE CANAL

THE WRIGHT BUILDING

REGENT'S VIEW

EXPERIENCE LIFE BY THE CANAL



Located on the edge of Regent's Canal, world-renowned Architects RSHP have transformed the iconic Bethnal Green Gasometers into 555 unique homes.

With fantastic facilities in an impressive Canalside Location, the 63 apartments in The Wright Building offer unrivalled views, turning this celebrated destination into one of East London's most desirable addresses.



Computer-generated images are indicative only.



REGENT'S CANAL

MARIAN PLACE

CANALSIDE PARK

THE WRIGHT BUILDING

Completion Q4 2025 / Q1 2026
10 floors
63 private apartments
6,619 sq m / 71,256 sq ft

RESIDENT'S FACILITIES

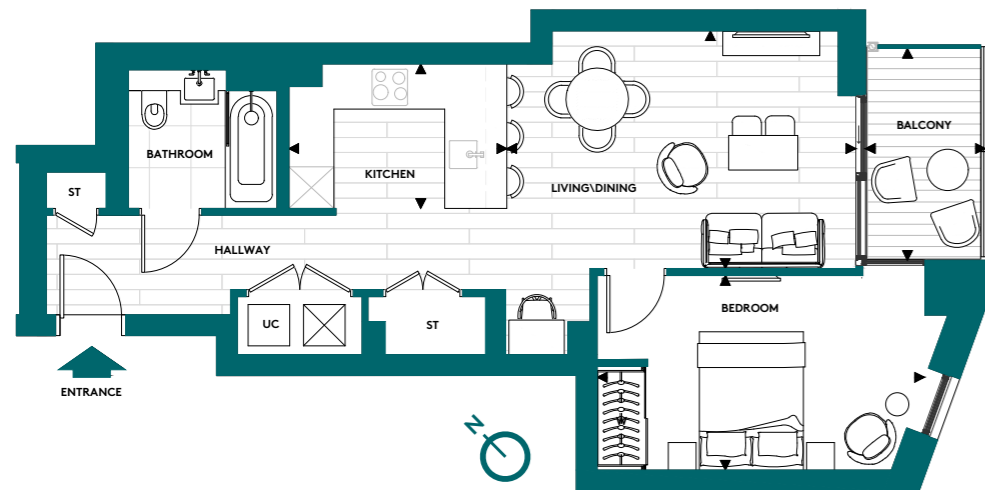
Residents can enjoy a range of amenities conveniently situated within the largest gas holder. You'll find everything you need, including a concierge, lounge, screening room, roof terrace, workspaces and wellness studios, all equipped with the latest features and technology.

COMMERCIAL SPACES

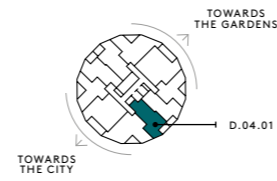
The redevelopment of Regent's Canal has unveiled prime waterfront commercial spaces at Regent's View. Perfect for restaurants, bars, and independent shops, it's set to become a dynamic destination for businesses and a vibrant spot for community.

RESIDENT'S ENTRANCES

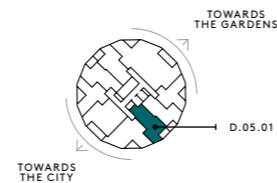
ONE BED APARTMENT
TYPE : X1B-B



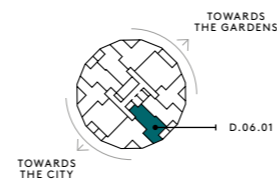
FLOOR 4



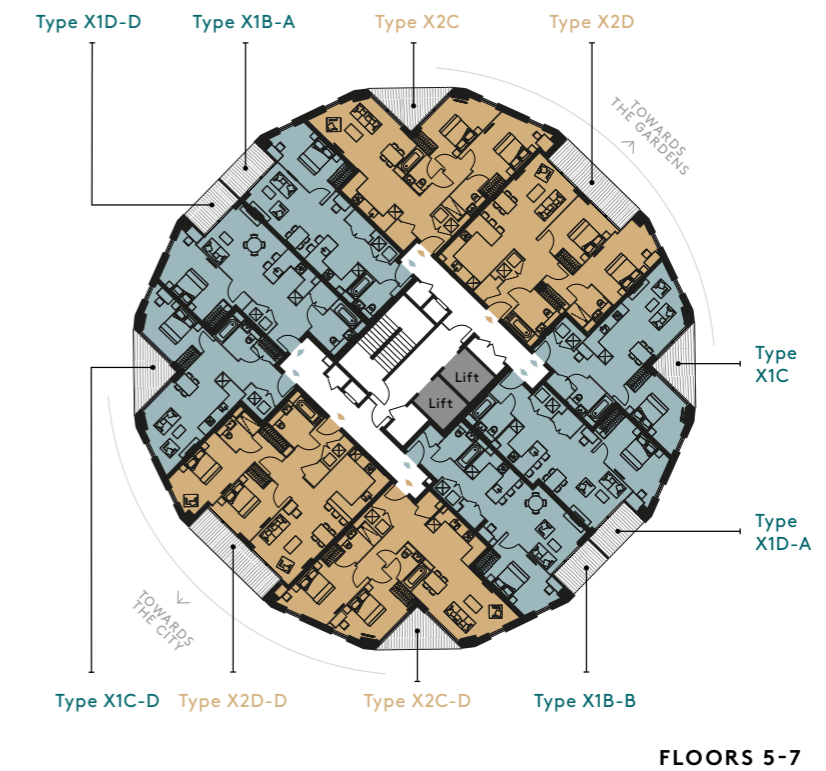
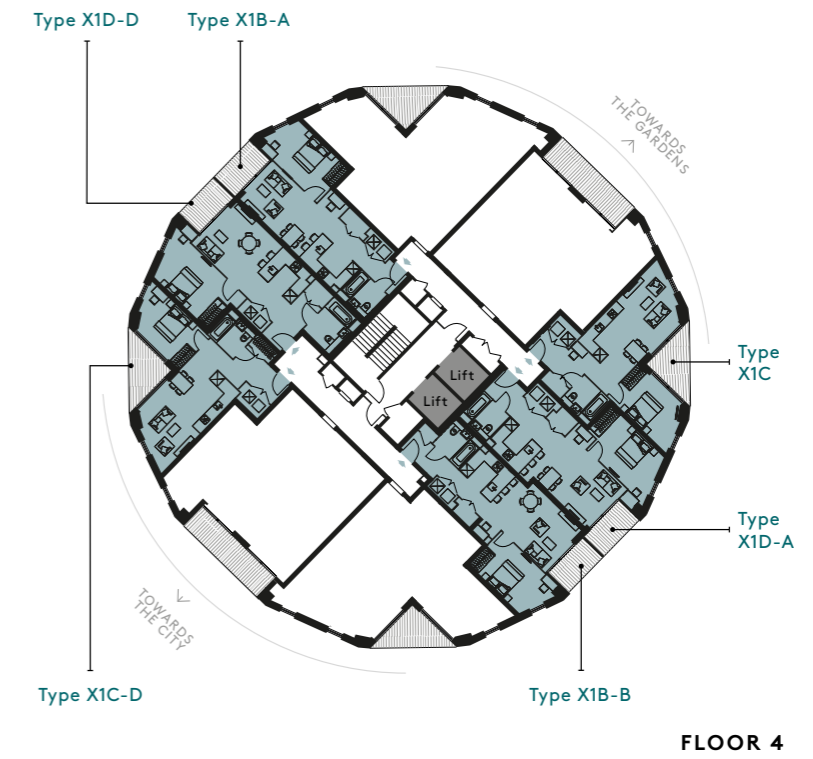
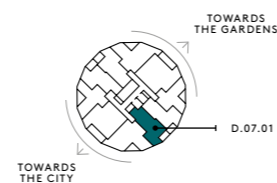
FLOOR 5



FLOOR 6



FLOOR 7



KEY

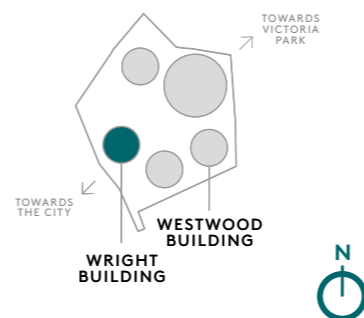
- W: Wardrobe
- ST: Storage
- UC: Utility Cupboard

56.47sqm - (607.8sqft)

Living/Dining	4.99m x 3.43m	16' 5" x 11' 3"
Kitchen	3.15m x 2.18m	10' 4" x 7' 2"
Bedroom	4.65m x 2.81m	15' 3" x 9' 3"
Balcony	1.64m x 3.03m	5' 5" x 10' 0"

Floorplans shown for Regent's View are for approximate measurements only. Exact layouts and sizes may vary. All measurements may vary within a tolerance of 5%. The dimensions are not intended to be used for carpet sizes, appliance sizes or items of furniture.

LOCATION



**TWO BED APARTMENT
TYPE : X2C-D**



KEY

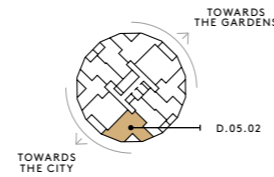
- W: Wardrobe
- ST: Storage
- UC: Utility Cupboard
- OW: Optional Wardrobe

76.7sqm - (825.5sqft)

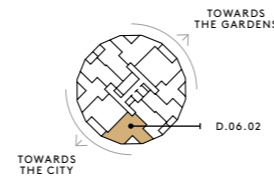
Living/Dining	5.25m x 3.53m	17' 3" x 11' 7"
Kitchen	3.63m x 3.07m	11' 11" x 10' 1"
Bedroom 1	3.10m x 4.63m	10' 2" x 15' 2"
Bedroom 2	2.72m x 4.53m	8' 11" x 14' 11"
Balcony	1.48m x 2.53m	4' 10" x 8' 4"

Floorplans shown for Regent's View are for approximate measurements only. Exact layouts and sizes may vary. All measurements may vary within a tolerance of 5%. The dimensions are not intended to be used for carpet sizes, appliance sizes or items of furniture.

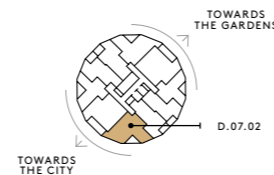
FLOOR 5



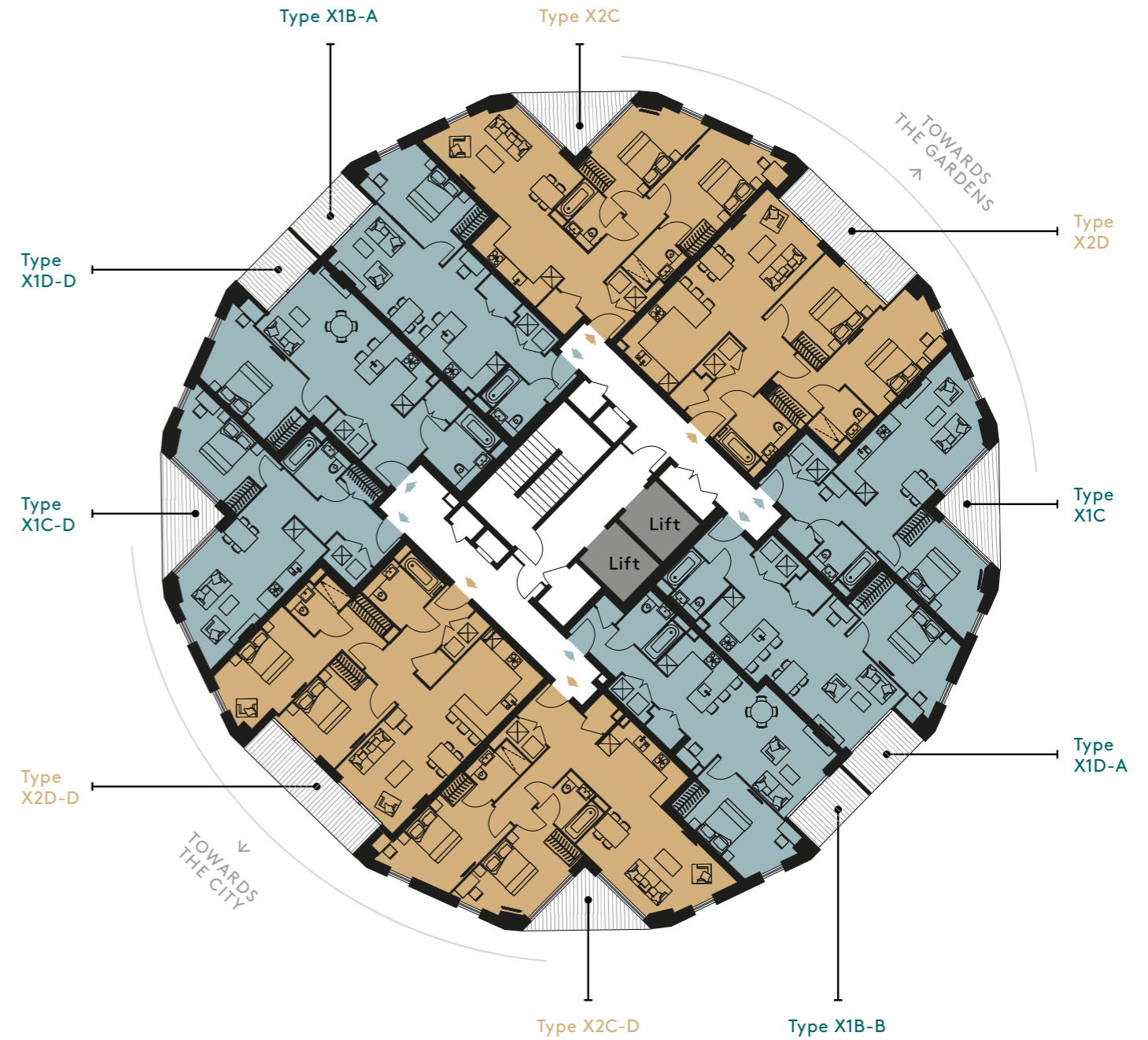
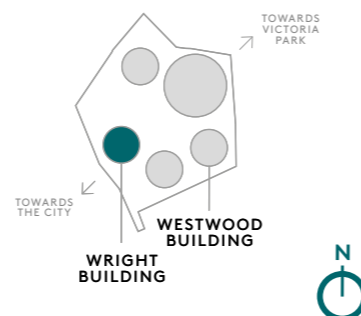
FLOOR 6



FLOOR 7



LOCATION



FLOORS 5-7



**THREE BED APARTMENT
TYPE : X3G**



KEY

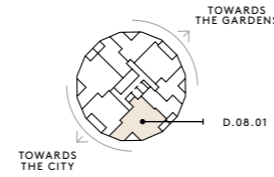
- W: Wardrobe
- ST: Storage
- UC: Utility Cupboard
- OW: Optional Wardrobe

116.1sqm - (1249.6sqft)

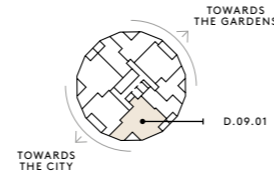
Living	4.96m x 3.73m	16' 3" x 12' 3"
Kitchen/Dining	4.35m x 5.42m	14' 3" x 17' 10"
Bedroom 1	3.12m x 5.72m	10' 3" x 18' 9"
Bedroom 2	5.52m x 3.56m	18' 1" x 11' 8"
Bedroom 3	4.73m x 2.87m	15' 6" x 9' 5"
Balcony 1	1.64m x 3.06m	5' 5" x 10' 0"
Balcony 2	2.05m x 1.85m	6' 9" x 6' 1"

Floorplans shown for Regent's View are for approximate measurements only. Exact layouts and sizes may vary. All measurements may vary within a tolerance of 5%. The dimensions are not intended to be used for carpet sizes, appliance sizes or items of furniture.

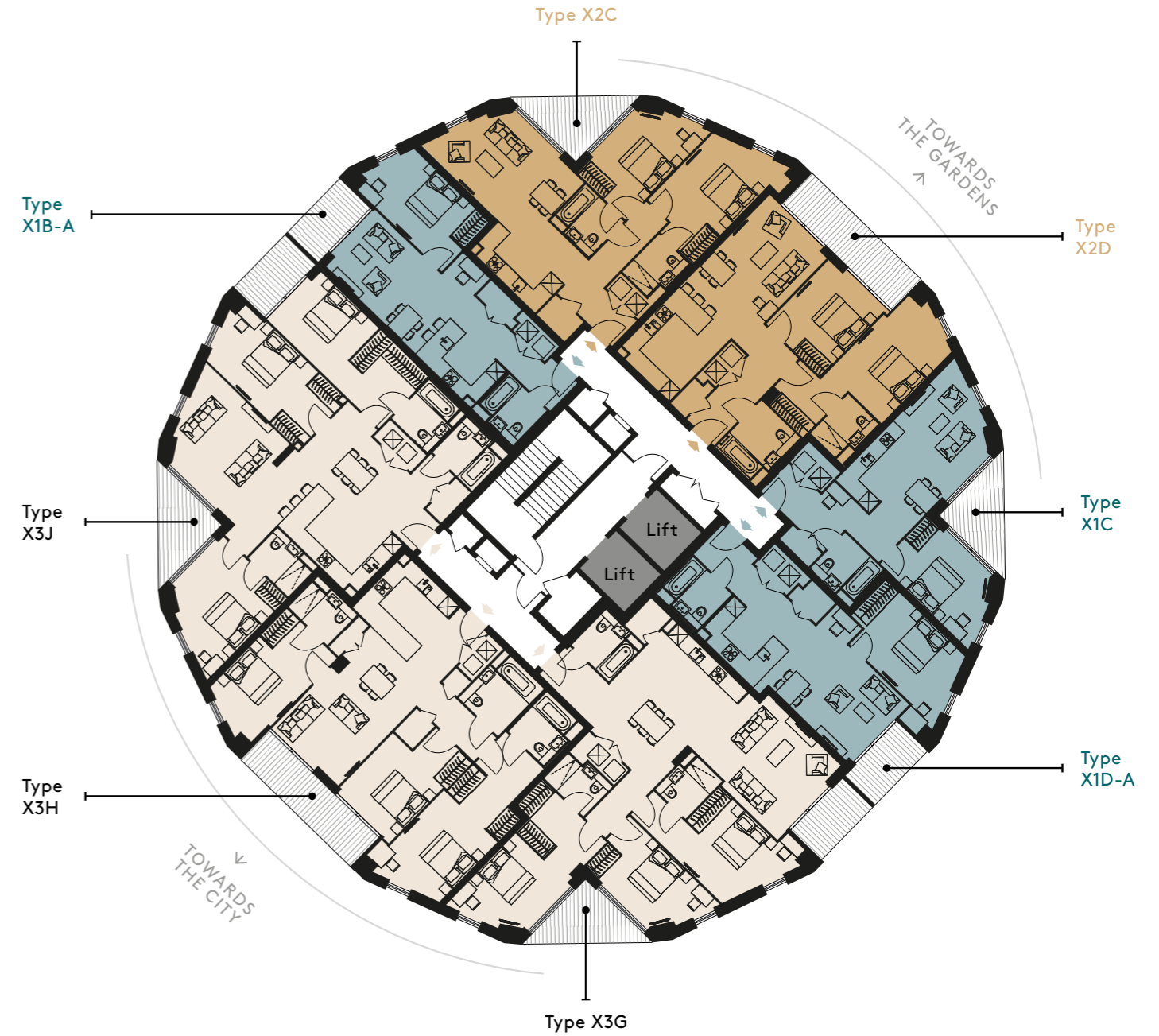
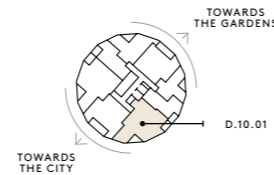
FLOOR 8



FLOOR 9

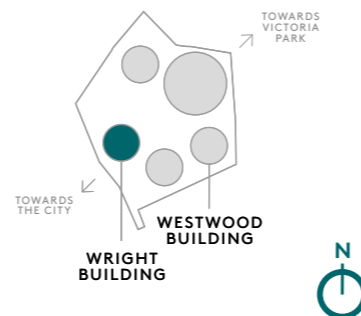


FLOOR 10

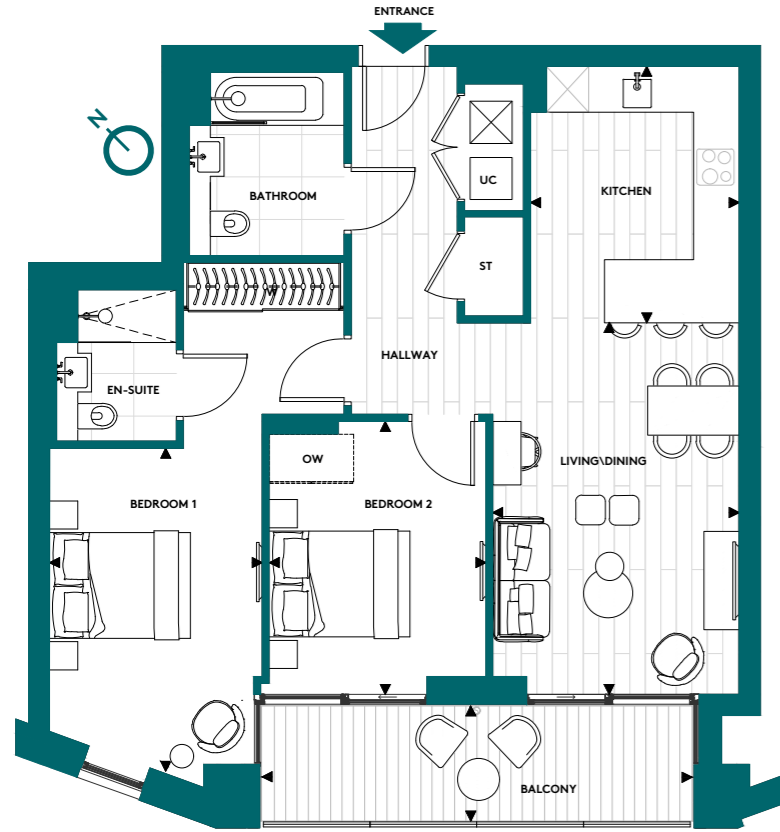


FLOORS 8-10

LOCATION



**TWO BED APARTMENT
WHEELCHAIR ADAPTABLE
TYPE : X2D-D**



KEY

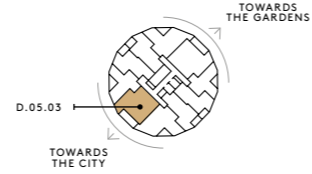
- W: Wardrobe
- ST: Storage
- UC: Utility Cupboard
- OW: Optional Wardrobe

83.6sqm - (899.8sqft)

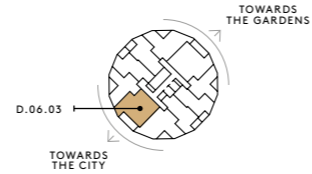
Living/Dining	3.50m x 5.23m	11' 6" x 17' 2"
Kitchen	2.96m x 3.64m	9' 9" x 11' 11"
Bedroom 1	3.04m x 4.59m	10' 0" x 15' 1"
Bedroom 2	3.10m x 3.83m	10' 2" x 12' 7"
Balcony	6.12m x 1.65m	20' 1" x 5' 5"

Floorplans shown for Regent's View are for approximate measurements only. Exact layouts and sizes may vary. All measurements may vary within a tolerance of 5%. The dimensions are not intended to be used for carpet sizes, appliance sizes or items of furniture.

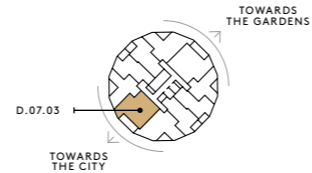
FLOOR 5



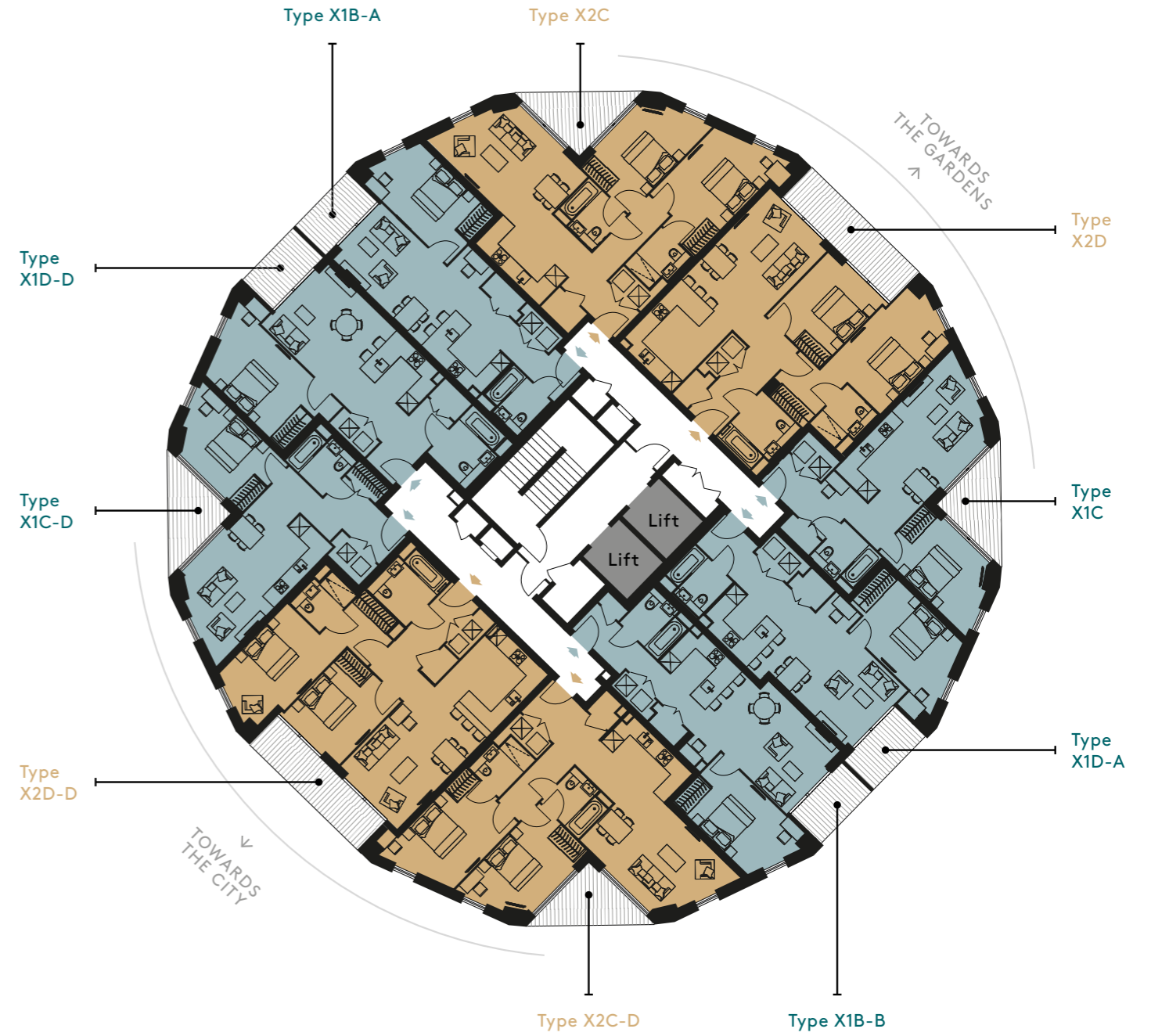
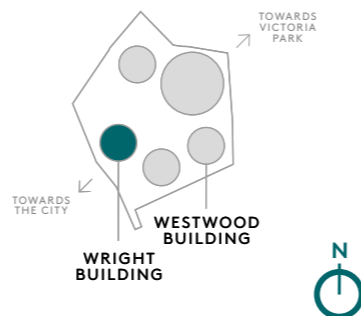
FLOOR 6



FLOOR 7

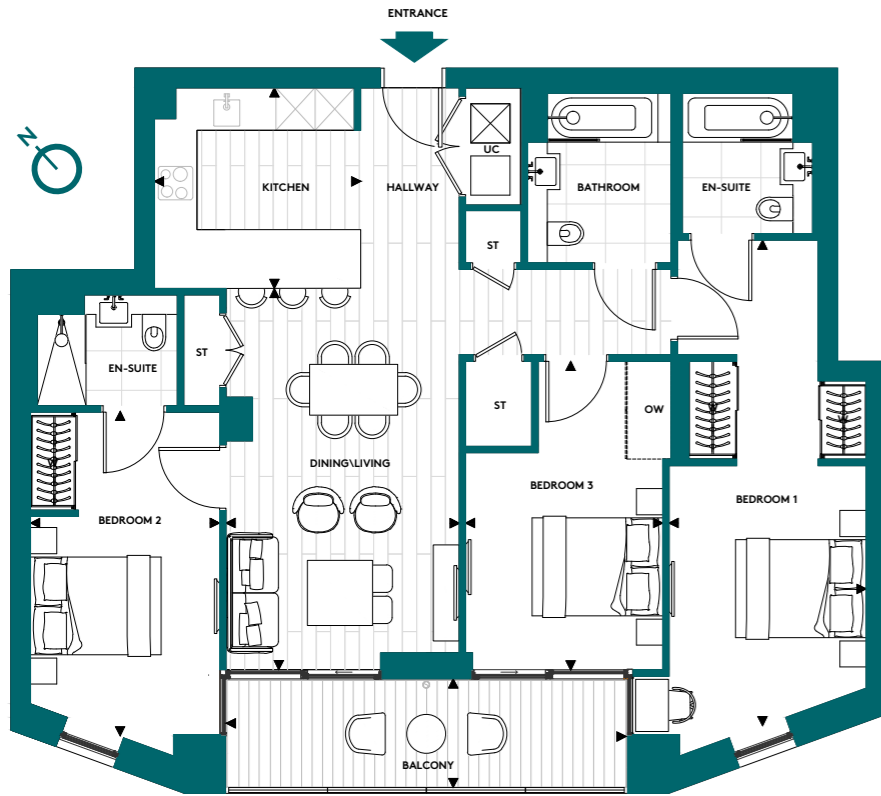


LOCATION

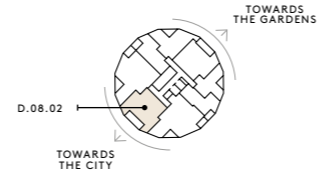


FLOORS 5-7

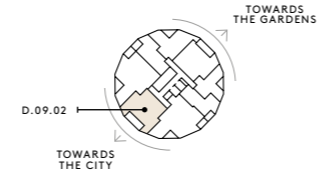
**THREE BED APARTMENT
WHEELCHAIR ADAPTABLE
TYPE : X3H**



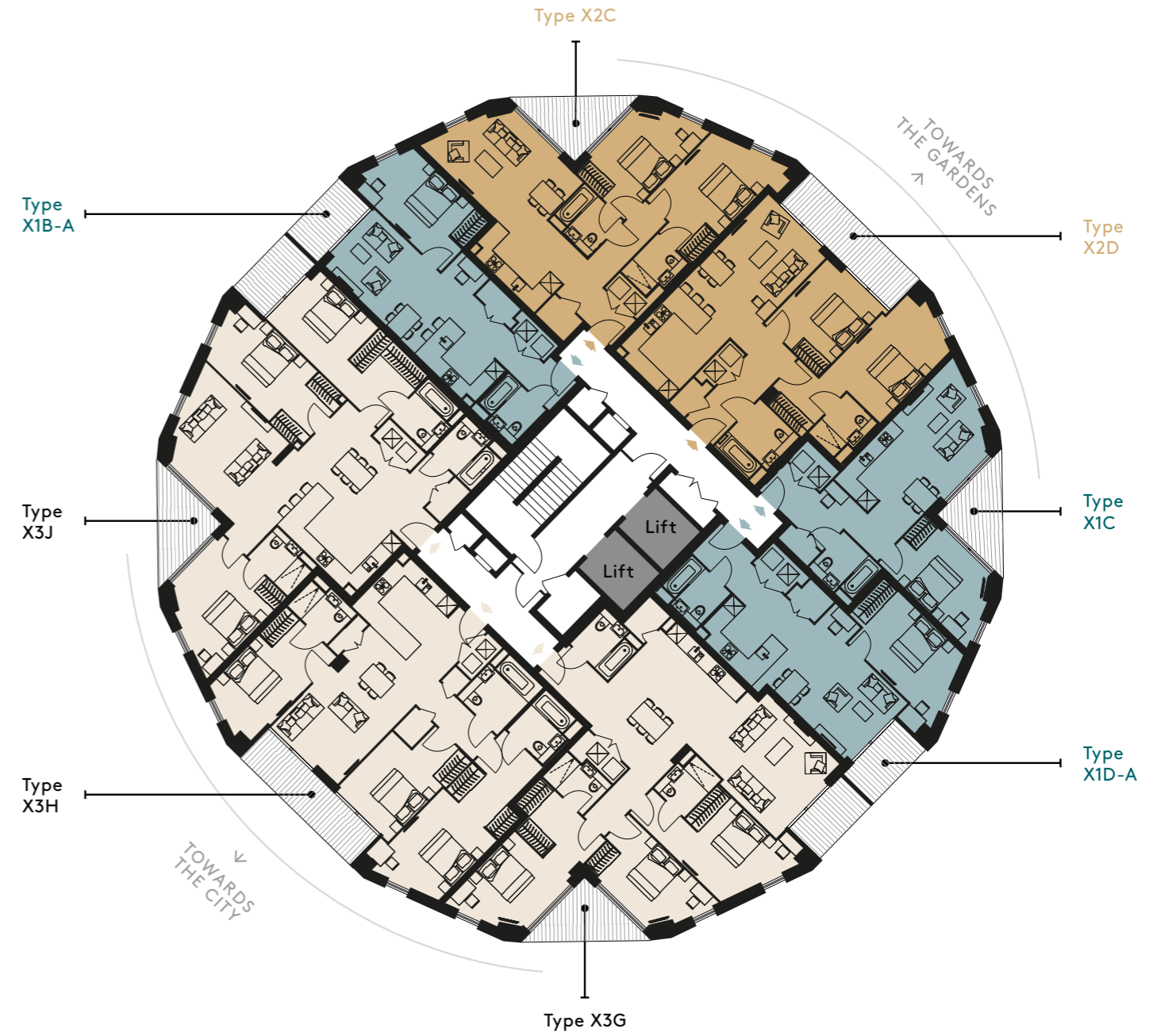
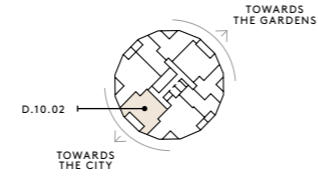
FLOOR 8



FLOOR 9



FLOOR 10



KEY

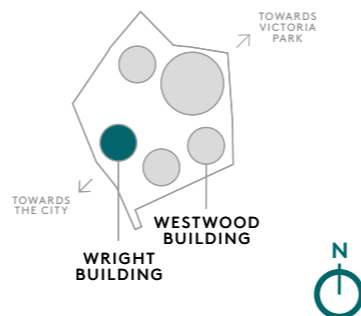
- W: Wardrobe
- ST: Storage
- UC: Utility Cupboard
- OW: Optional Wardrobe

110.1sqm - (1185.1sqft)

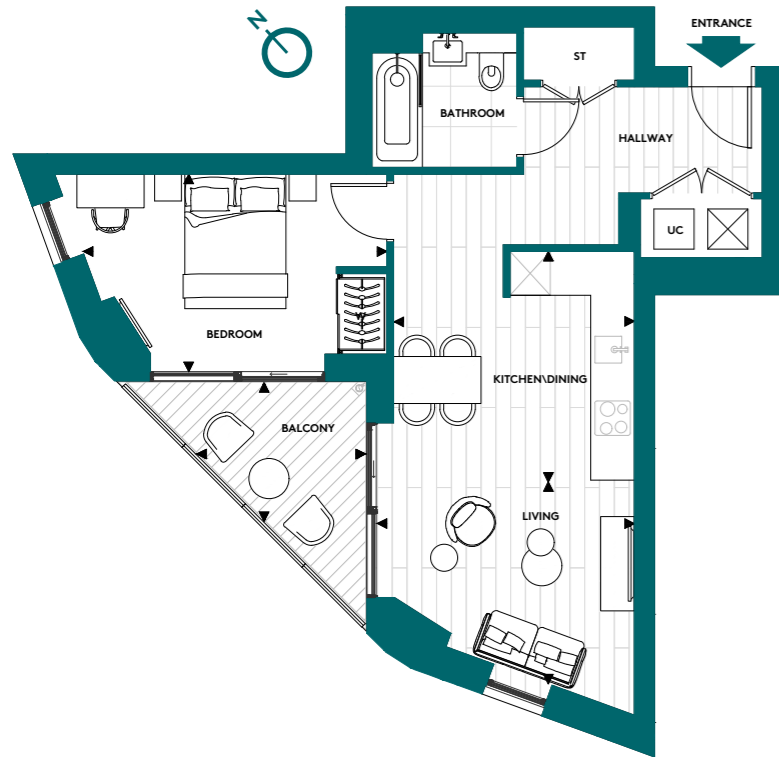
Living/Dining	3.57m x 5.79m	11' 9" x 19' 0"
Kitchen	3.15m x 3.07m	10' 4" x 10' 1"
Bedroom 1	3.02m x 7.45m	9' 11" x 24' 5"
Bedroom 2	2.90m x 4.98m	9' 6" x 16' 4"
Bedroom 3	3.02m x 4.68m	9' 11" x 15' 4"
Balcony	6.12m x 1.65m	20' 1" x 5' 5"

Floorplans shown for Regent's View are for approximate measurements only. Exact layouts and sizes may vary. All measurements may vary within a tolerance of 5%. The dimensions are not intended to be used for carpet sizes, appliance sizes or items of furniture.

LOCATION



ONE BED APARTMENT
TYPE : X1C-D



KEY

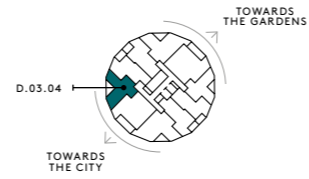
- W: Wardrobe
- ST: Storage
- UC: Utility Cupboard

53.1sqm - (571.5sqft)

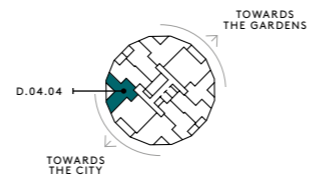
Living	3.79m x 3.00m	12' 5" x 9' 10"
Kitchen/Dining	3.58m x 3.43m	11' 8" x 11' 3"
Bedroom	4.51m x 2.93m	14' 10" x 9' 8"
Balcony	2.54m x 2.10m	8' 4" x 6' 11"

Floorplans shown for Regent's View are for approximate measurements only. Exact layouts and sizes may vary. All measurements may vary within a tolerance of 5%. The dimensions are not intended to be used for carpet sizes, appliance sizes or items of furniture.

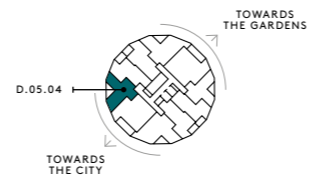
FLOOR 3



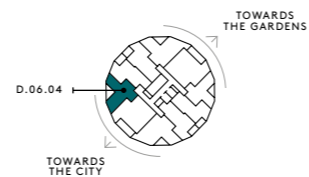
FLOOR 4



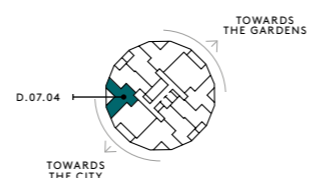
FLOOR 5



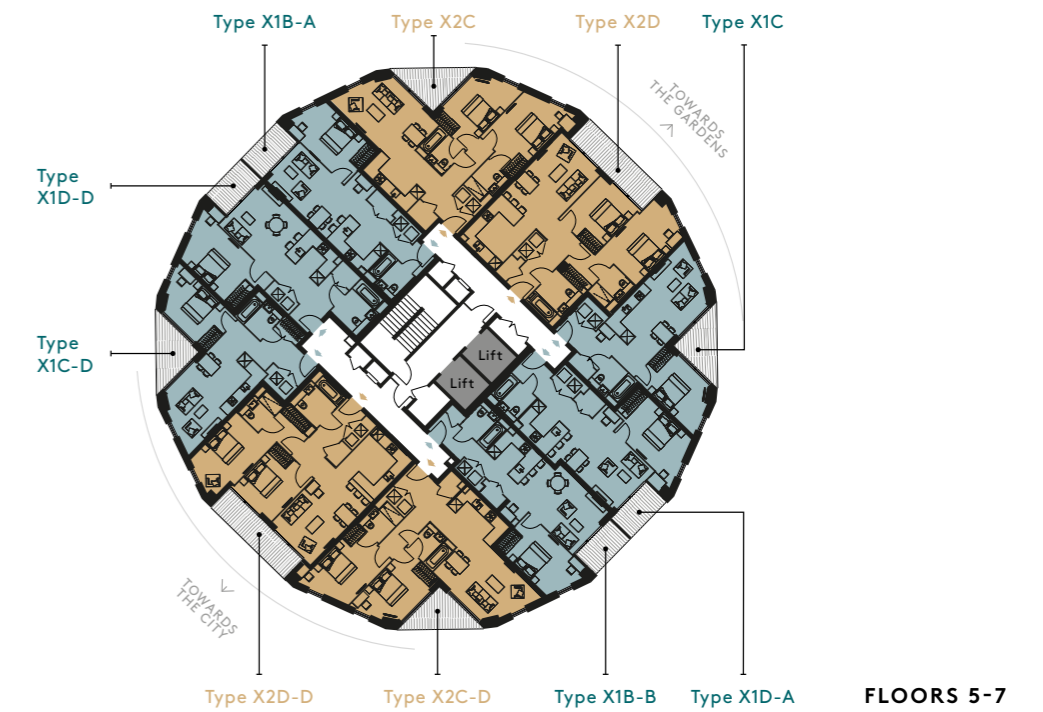
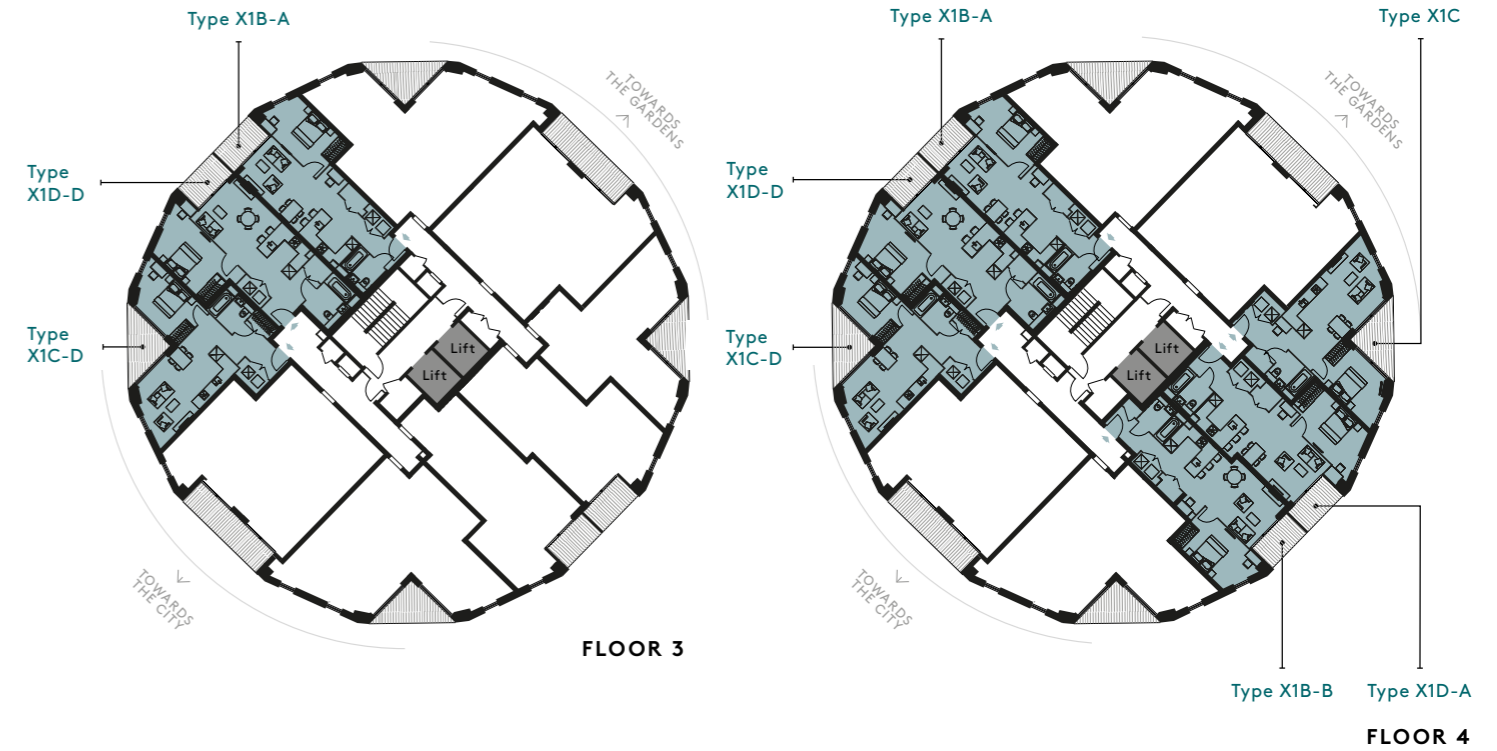
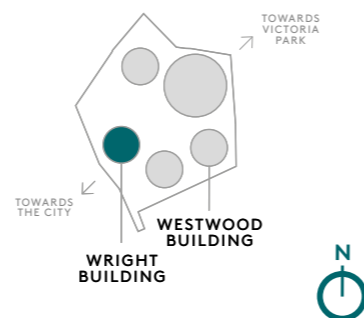
FLOOR 6



FLOOR 7



LOCATION



- One Bedroom
- Two Bedroom
- Three Bedroom



**THREE BED APARTMENT
TYPE : X3J**



KEY

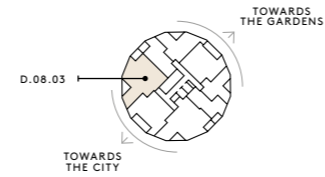
- W: Wardrobe
- ST: Storage
- UC: Utility Cupboard
- OW: Optional Wardrobe

121.7sqm - (1309.9sqft)

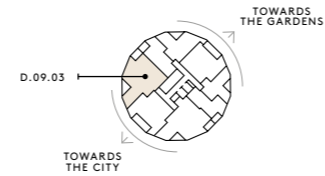
Living	6.24m x 4.09m	20' 6" x 13' 5"
Kitchen/Dining	4.23m x 5.25m	13' 11" x 17' 3"
Bedroom 1	6.35m x 2.91m	20' 10" x 9' 7"
Bedroom 2	3.79m x 3.94m	12' 5" x 12' 11"
Bedroom 3	5.87m x 2.80m	19' 3" x 9' 2"
Balcony 1	2.84m x 2.19m	9' 4" x 7' 2"
Balcony 2	1.63m x 3.03m	5' 4" x 9' 11"

Floorplans shown for Regent's View are for approximate measurements only. Exact layouts and sizes may vary. All measurements may vary within a tolerance of 5%. The dimensions are not intended to be used for carpet sizes, appliance sizes or items of furniture.

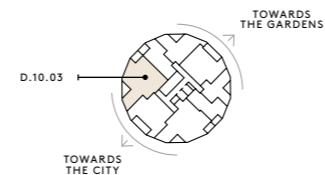
FLOOR 8



FLOOR 9

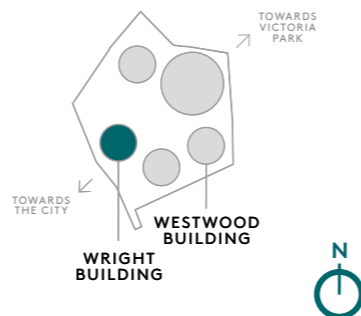


FLOOR 10

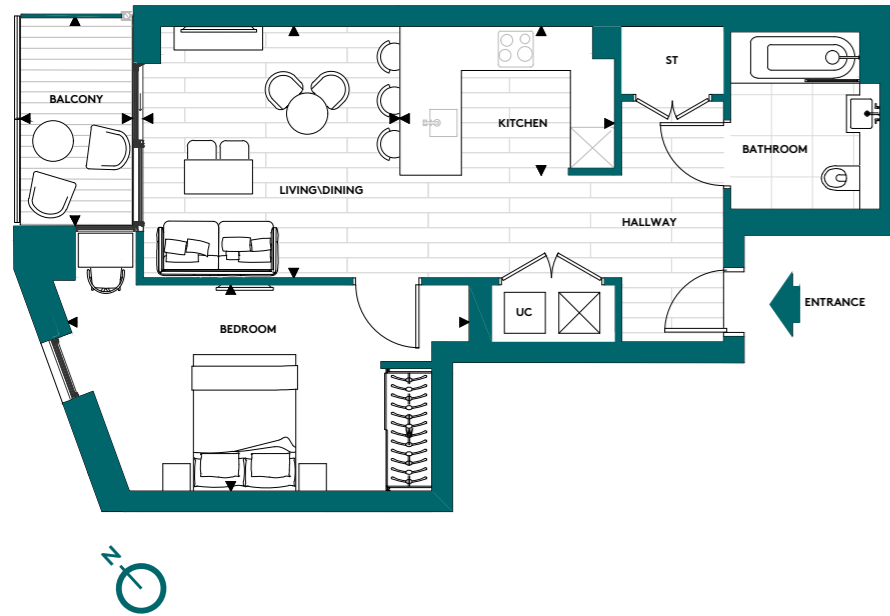


FLOORS 8-10

LOCATION



ONE BED APARTMENT
WHEELCHAIR ADAPTABLE
TYPE : X1D-D



KEY

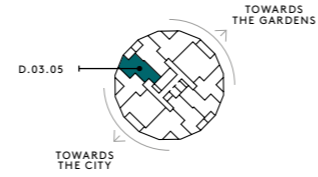
- W: Wardrobe
- ST: Storage
- UC: Utility Cupboard

58.1sqm - (625.3sqft)

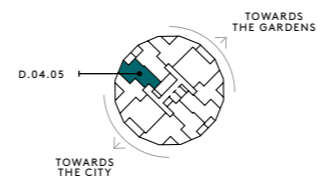
Living/Dining	3.72m x 3.69m	12' 3" x 12' 1"
Kitchen	3.15m x 2.10m	10' 4" x 6' 11"
Bedroom	5.89m x 3.02m	19' 4" x 9' 11"
Balcony	1.65m x 3.03m	5' 5" x 10' 0"

Floorplans shown for Regent's View are for approximate measurements only. Exact layouts and sizes may vary. All measurements may vary within a tolerance of 5%. The dimensions are not intended to be used for carpet sizes, appliance sizes or items of furniture.

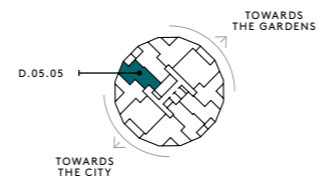
FLOOR 3



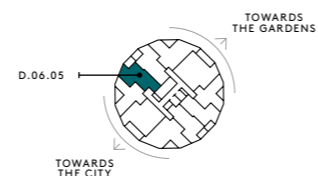
FLOOR 4



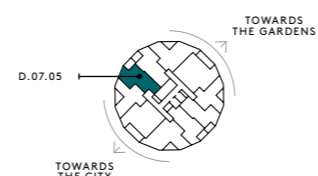
FLOOR 5



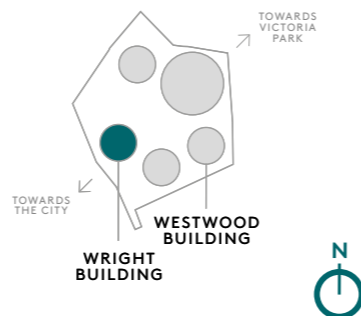
FLOOR 6



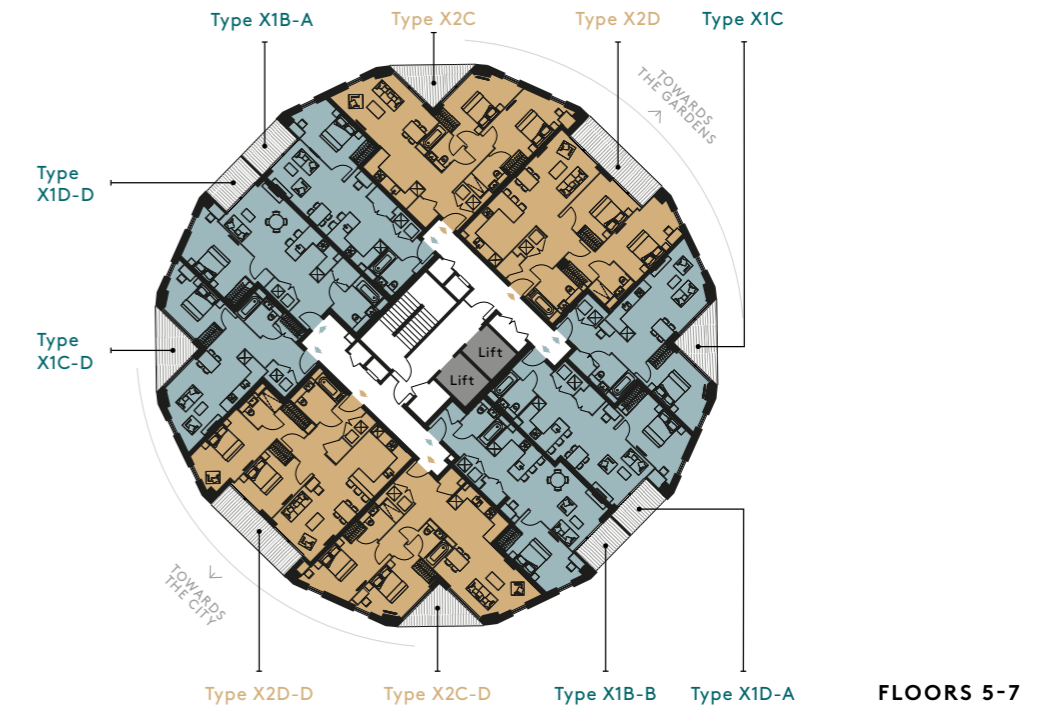
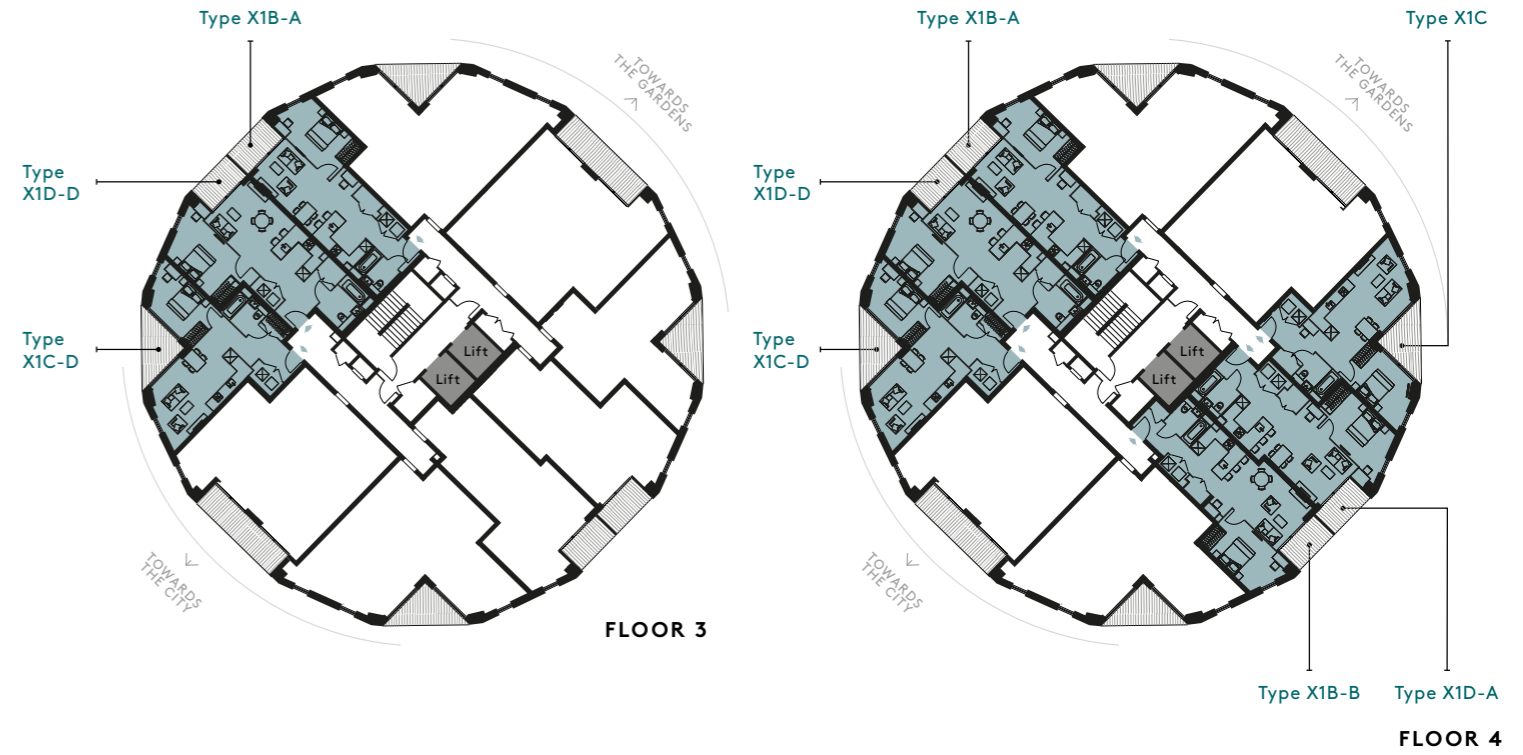
FLOOR 7



LOCATION



REGENT'S VIEW



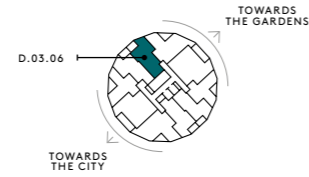
- One Bedroom
- Two Bedroom
- Three Bedroom



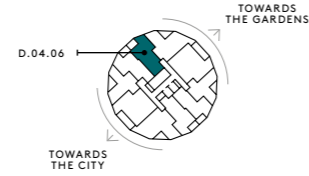
ONE BED APARTMENT
TYPE : X1B-A

REGENT'S VIEW

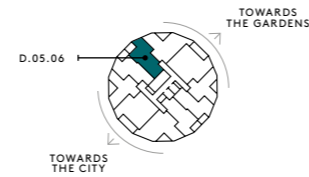
FLOOR 3



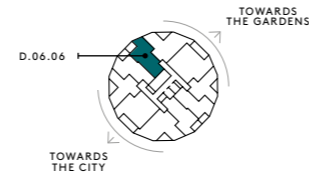
FLOOR 4



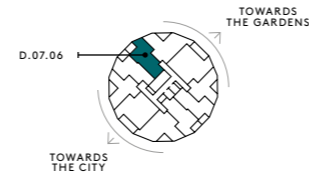
FLOOR 5



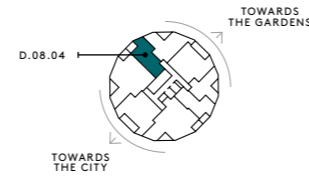
FLOOR 6



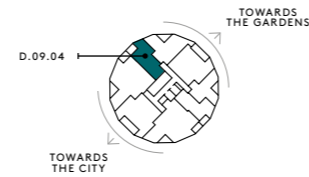
FLOOR 7



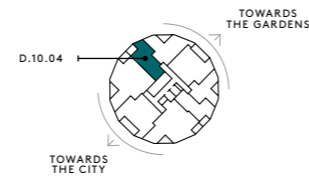
FLOOR 8



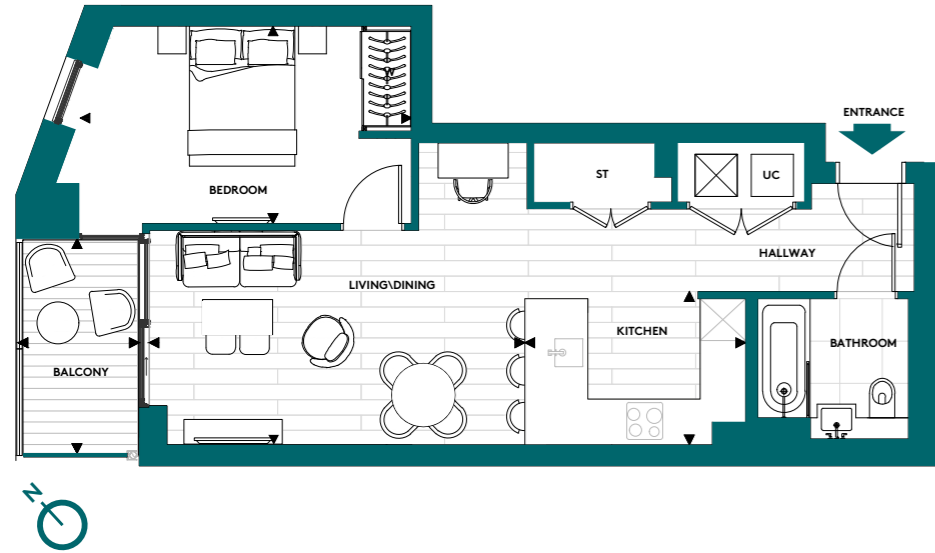
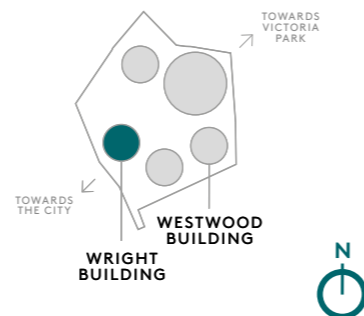
FLOOR 9



FLOOR 10



LOCATION



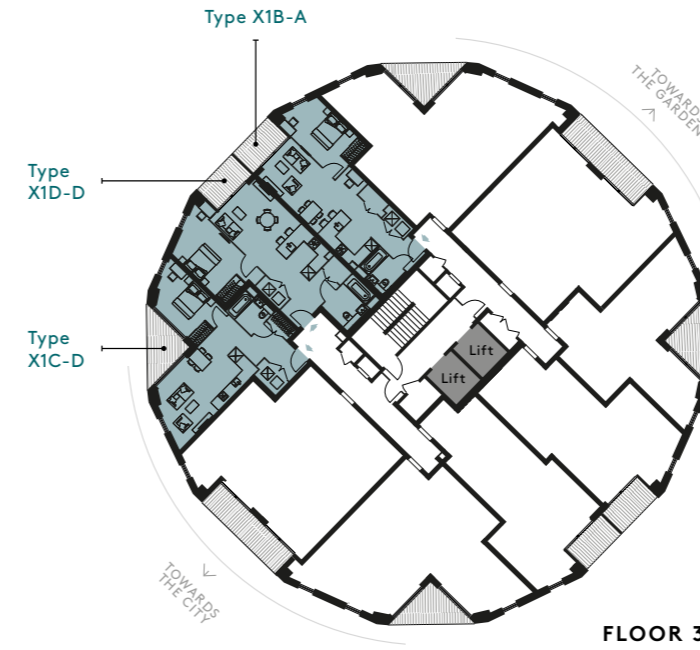
KEY

- W: Wardrobe
- ST: Storage
- UC: Utility Cupboard

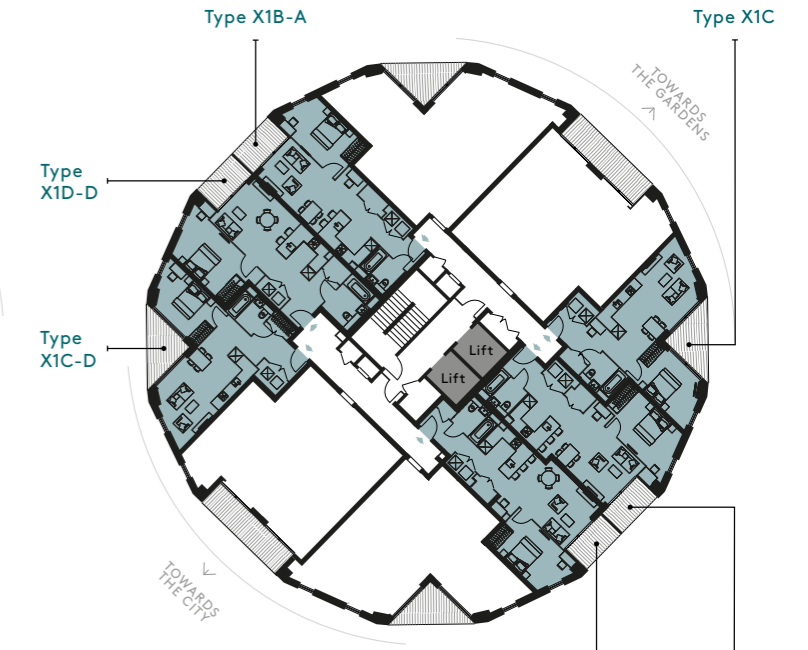
54.6sqm - (587.7sqft)

Living/Dining	5.30m x 3.05m	17' 5" x 10' 0"
Kitchen	3.15m x 2.18m	10' 4" x 7' 2"
Bedroom	4.66m x 2.81m	15' 4" x 9' 3"
Balcony	1.65m x 3.03m	5' 5" x 10' 0"

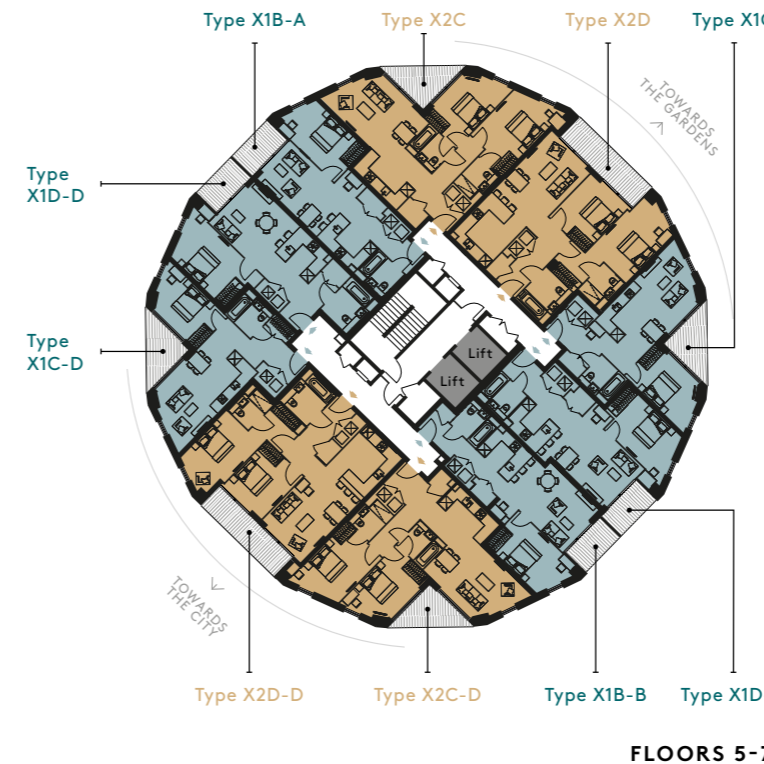
Floorplans shown for Regent's View are for approximate measurements only. Exact layouts and sizes may vary. All measurements may vary within a tolerance of 5%. The dimensions are not intended to be used for carpet sizes, appliance sizes or items of furniture.



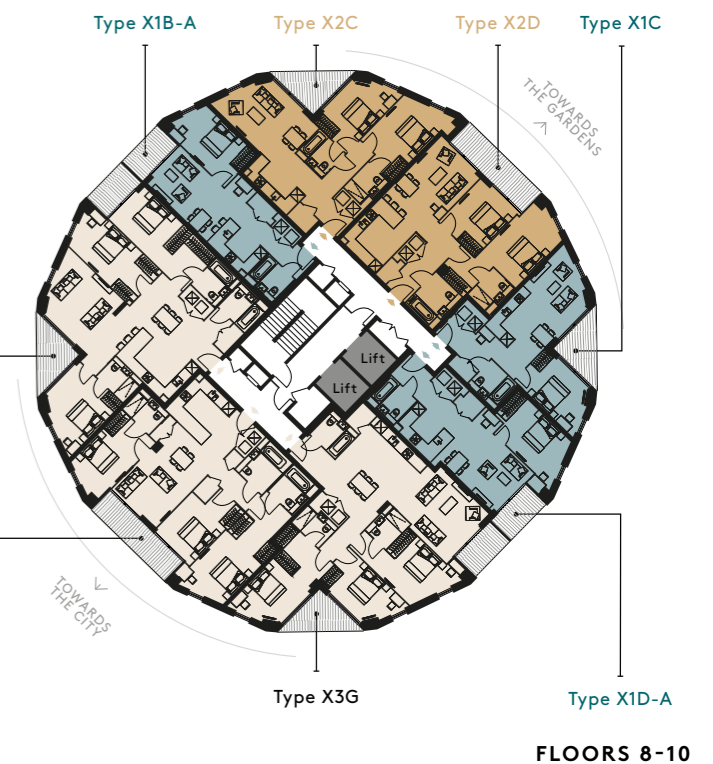
FLOOR 3



FLOOR 4



FLOORS 5-7



FLOORS 8-10



**TWO BED APARTMENT
TYPE : X2C**



KEY

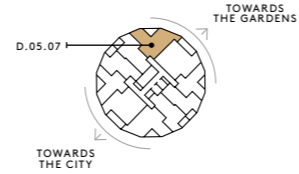
- W: Wardrobe
- ST: Storage
- UC: Utility Cupboard
- OW: Optional Wardrobe

78sqm - (839.9sqft)

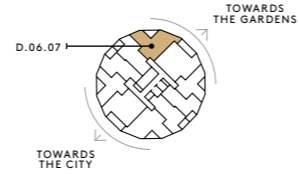
Living/Dining	5.27m x 3.60m	17' 4" x 11' 10"
Kitchen	3.62m x 3.10m	11' 11" x 10' 2"
Bedroom 1	3.10m x 5.00m	10' 2" x 16' 5"
Bedroom 2	2.79m x 4.57m	9' 2" x 15' 0"
Balcony	2.20m x 2.19m	7' 3" x 7' 2"

Floorplans shown for Regent's View are for approximate measurements only. Exact layouts and sizes may vary. All measurements may vary within a tolerance of 5%. The dimensions are not intended to be used for carpet sizes, appliance sizes or items of furniture.

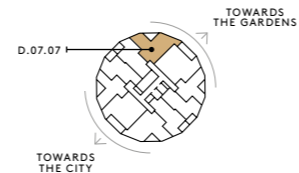
FLOOR 5



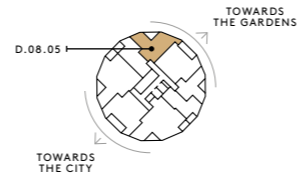
FLOOR 6



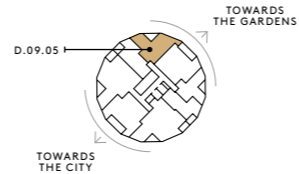
FLOOR 7



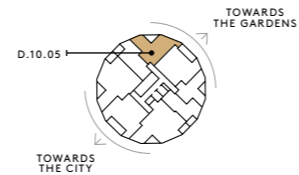
FLOOR 8



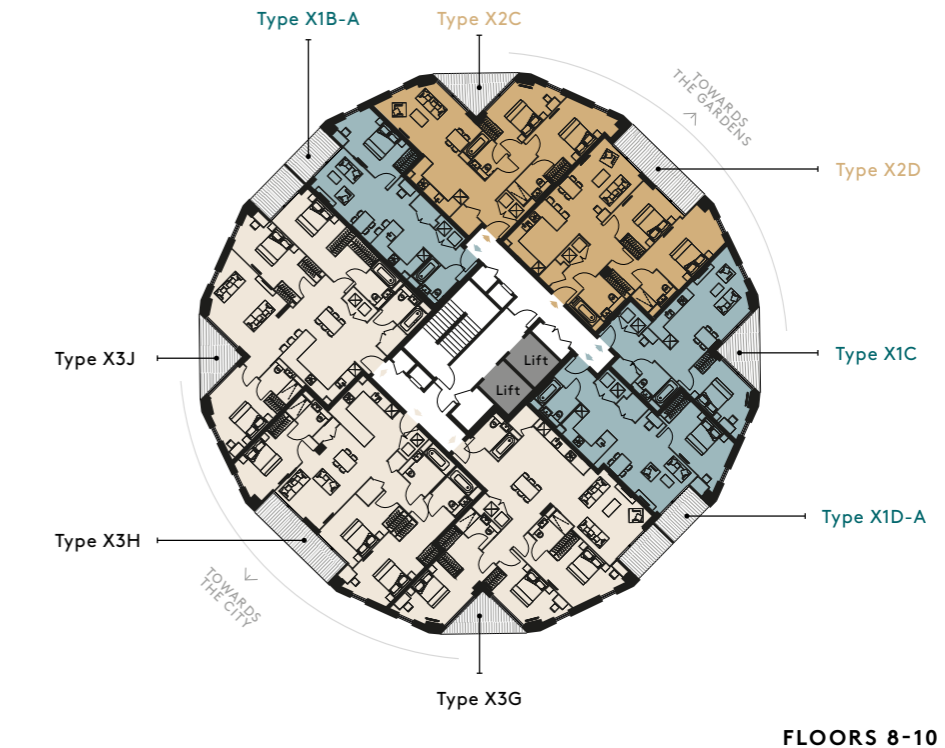
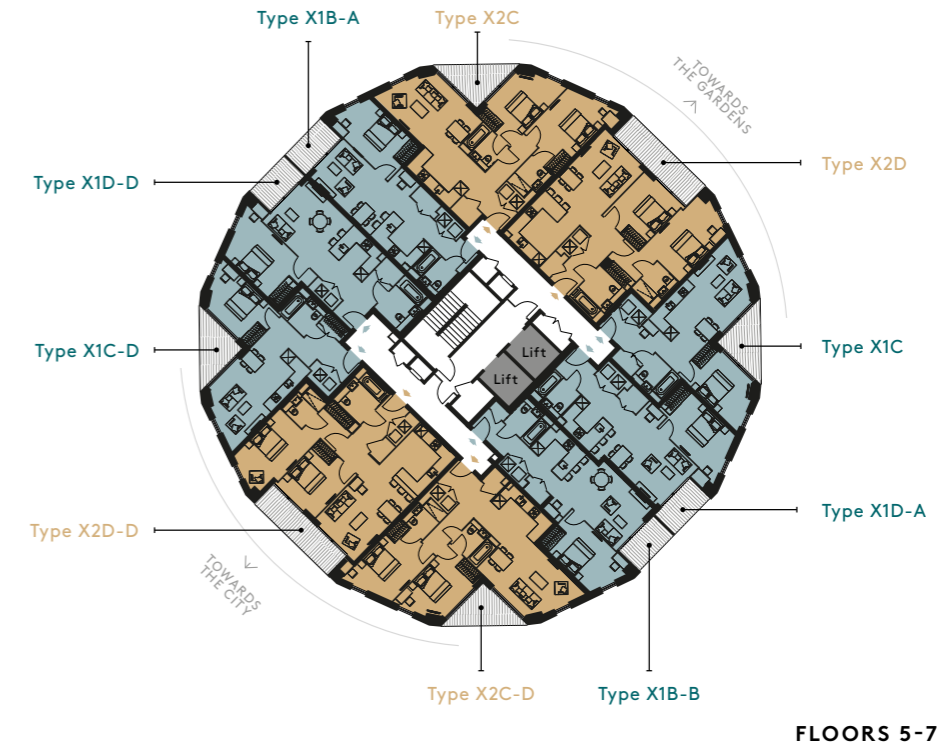
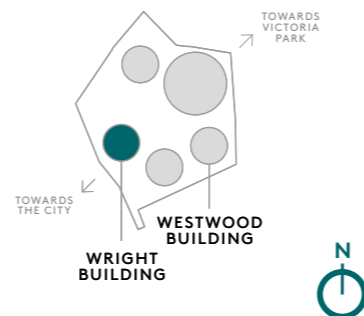
FLOOR 9



FLOOR 10



LOCATION



**TWO BED APARTMENT
WHEELCHAIR ADAPTABLE
TYPE : X2D**



KEY

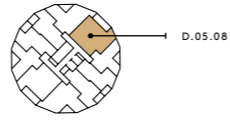
- W: Wardrobe
- ST: Storage
- UC: Utility Cupboard
- OW: Optional Wardrobe

84sqm - (903.9sqft)

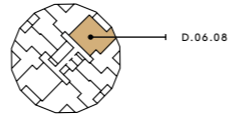
Living/Dining	3.50m x 5.27m	11' 6" x 17' 4"
Kitchen	2.96m x 3.64m	9' 9" x 12' 0"
Bedroom 1	3.02m x 4.46m	9' 11" x 14' 8"
Bedroom 2	3.08m x 3.87m	10' 1" x 12' 8"
Balcony	6.17m x 1.71m	20' 3" x 5' 8"

Floorplans shown for Regent's View are for approximate measurements only. Exact layouts and sizes may vary. All measurements may vary within a tolerance of 5%. The dimensions are not intended to be used for carpet sizes, appliance sizes or items of furniture.

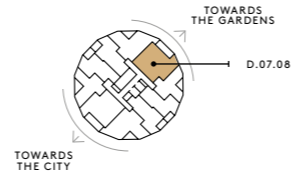
FLOOR 5



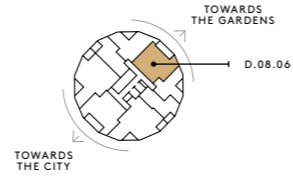
FLOOR 6



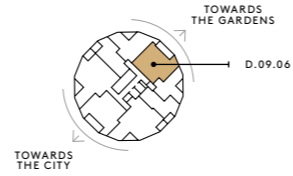
FLOOR 7



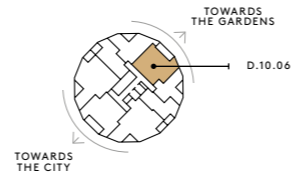
FLOOR 8



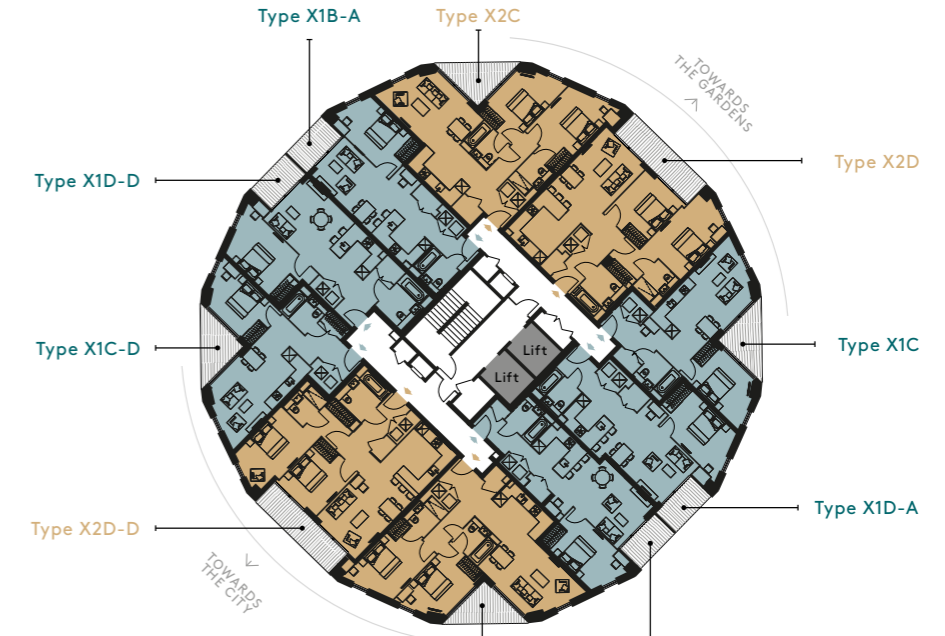
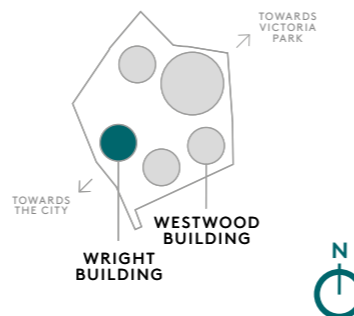
FLOOR 9



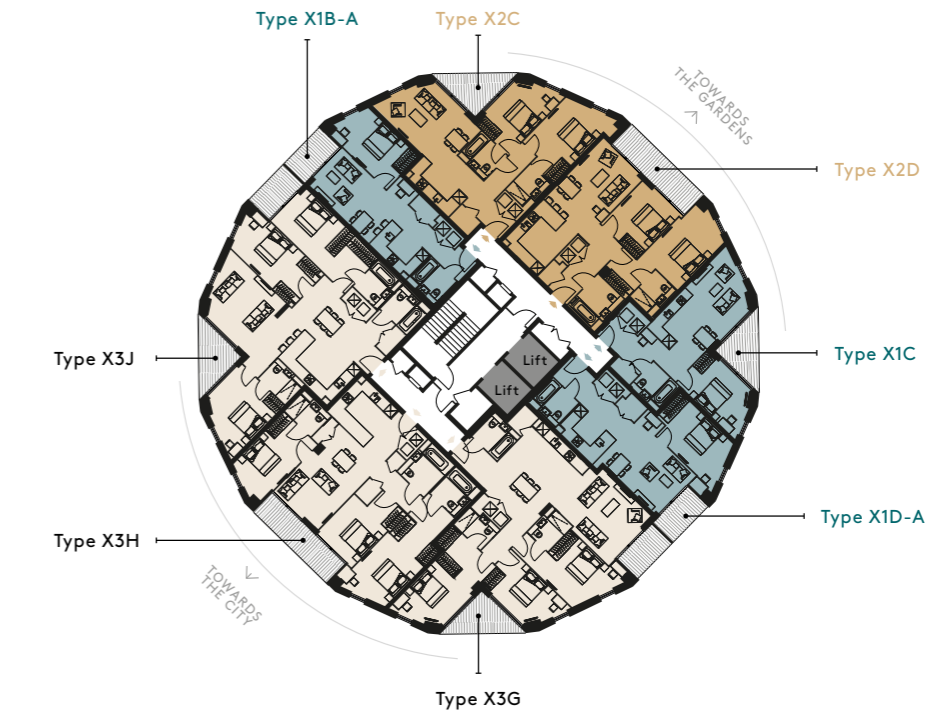
FLOOR 10



LOCATION



FLOORS 5-7

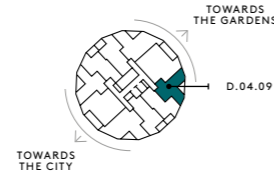


FLOORS 8-10

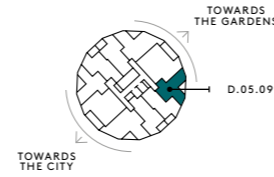


ONE BED APARTMENT
TYPE : X1C

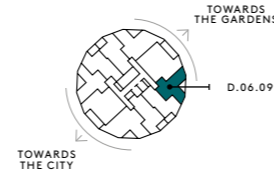
FLOOR 4



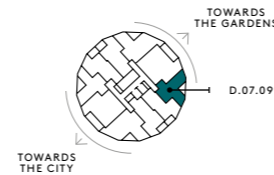
FLOOR 5



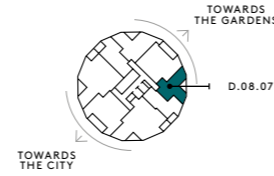
FLOOR 6



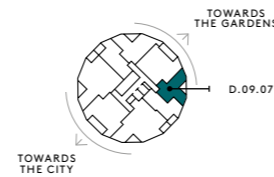
FLOOR 7



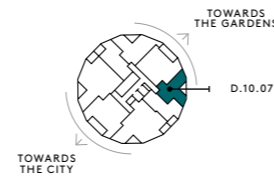
FLOOR 8



FLOOR 9



FLOOR 10



KEY

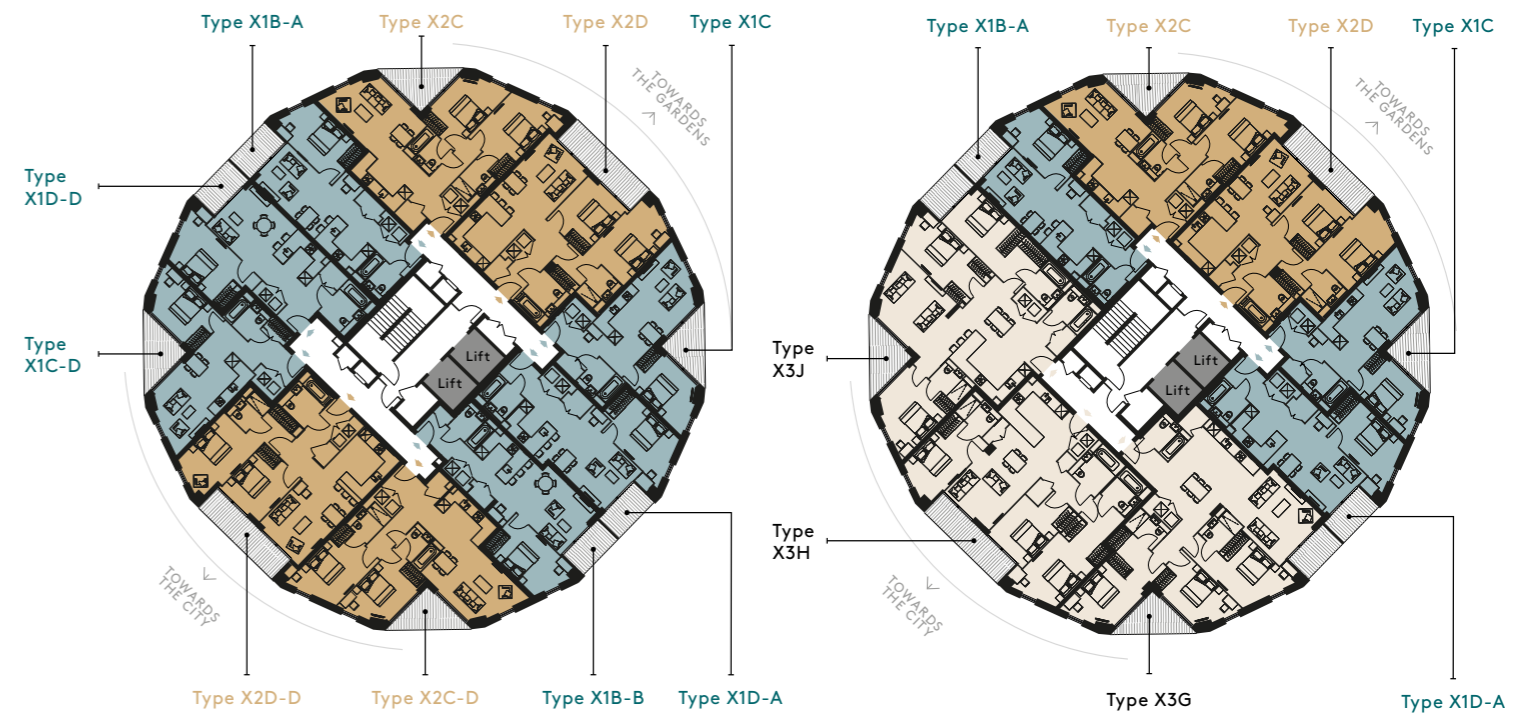
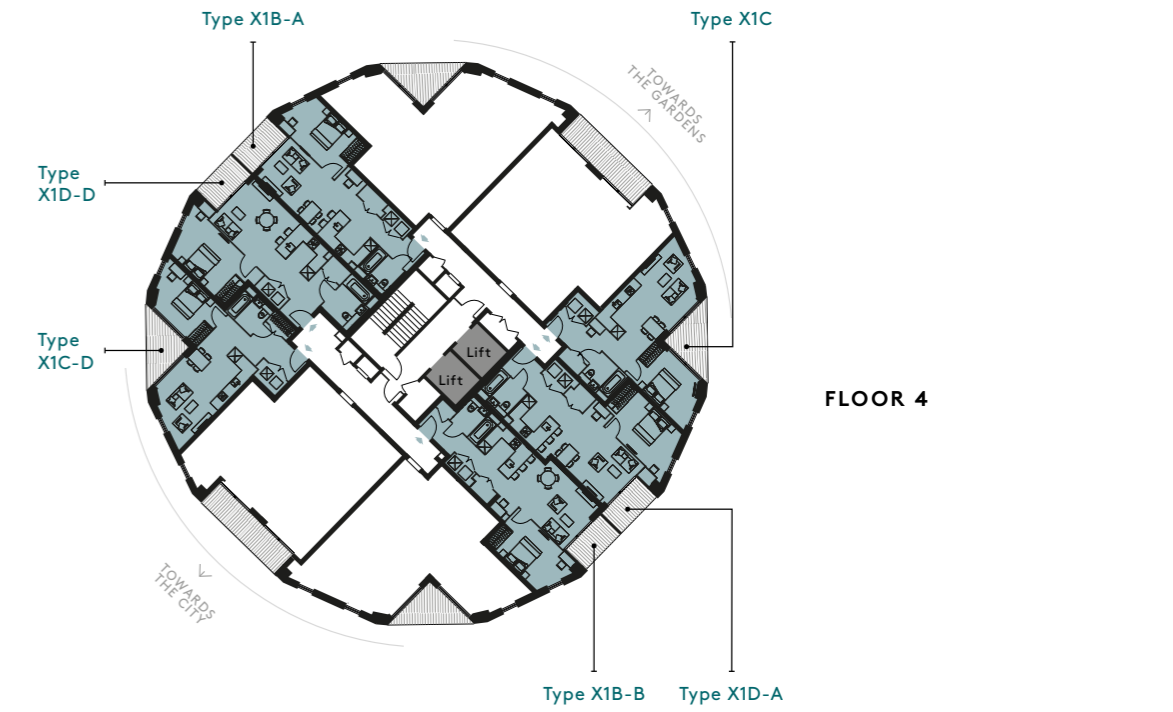
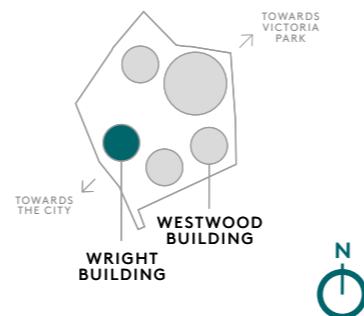
- W: Wardrobe
- ST: Storage
- UC: Utility Cupboard

52.7sqm - (567sqft)

Living	3.65m x 3.11m	12' 0" x 10' 3"
Kitchen/Dining	3.58m x 3.40m	6' 1" x 11' 2"
Bedroom	4.74m x 2.75m	15' 7" x 9' 0"
Balcony	2.24m x 2.21m	7' 4" x 7' 3"

Floorplans shown for Regent's View are for approximate measurements only. Exact layouts and sizes may vary. All measurements may vary within a tolerance of 5%. The dimensions are not intended to be used for carpet sizes, appliance sizes or items of furniture.

LOCATION



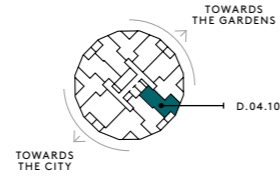
FLOORS 5-7

FLOORS 8-10

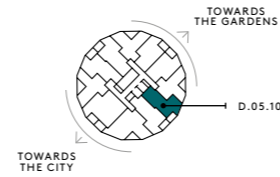


ONE BED APARTMENT
TYPE : X1D-A

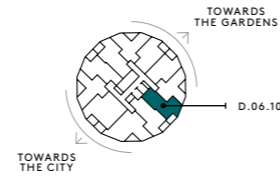
FLOOR 4



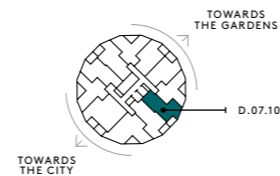
FLOOR 5



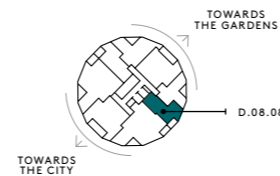
FLOOR 6



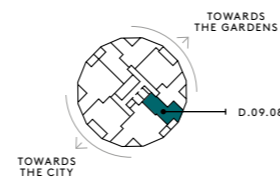
FLOOR 7



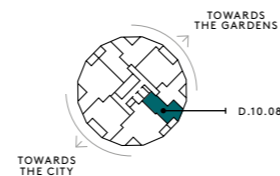
FLOOR 8



FLOOR 9



FLOOR 10



KEY

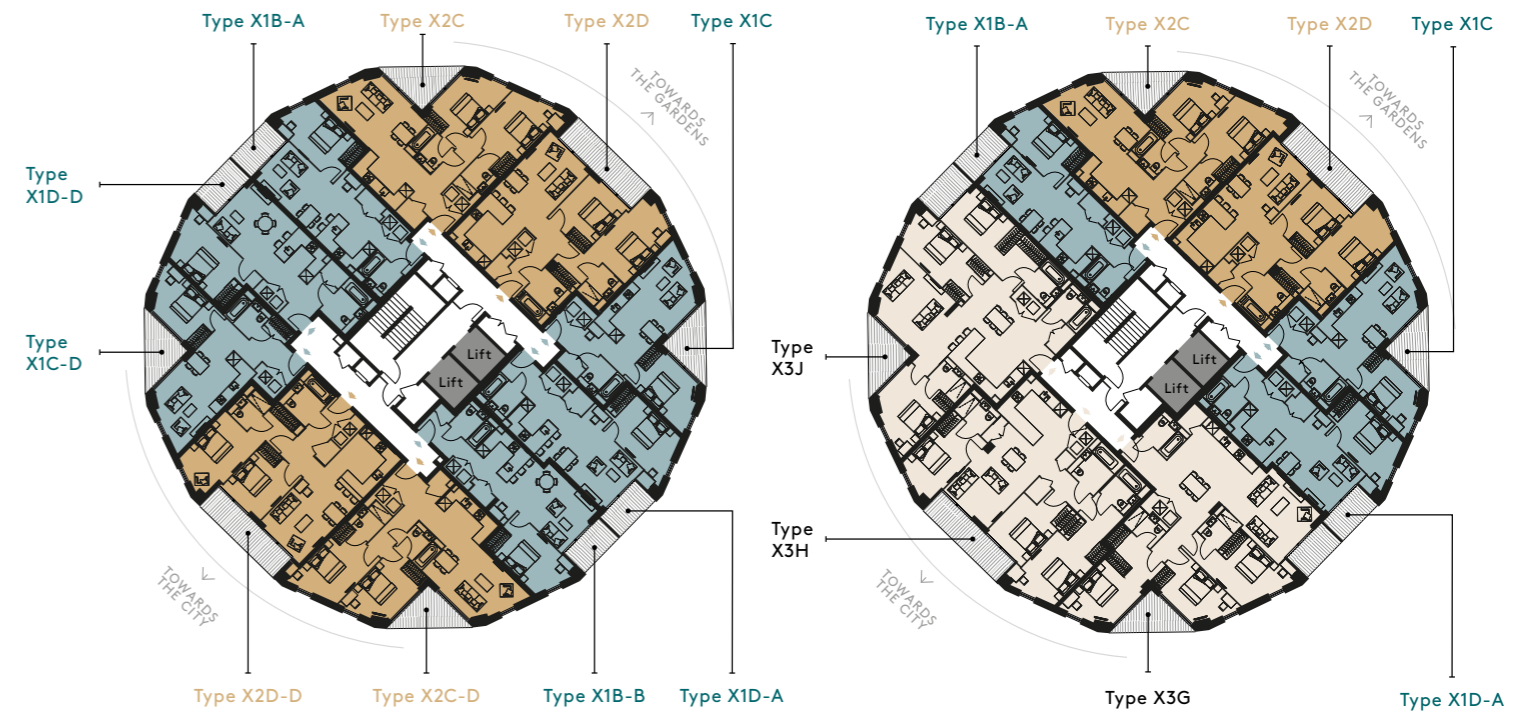
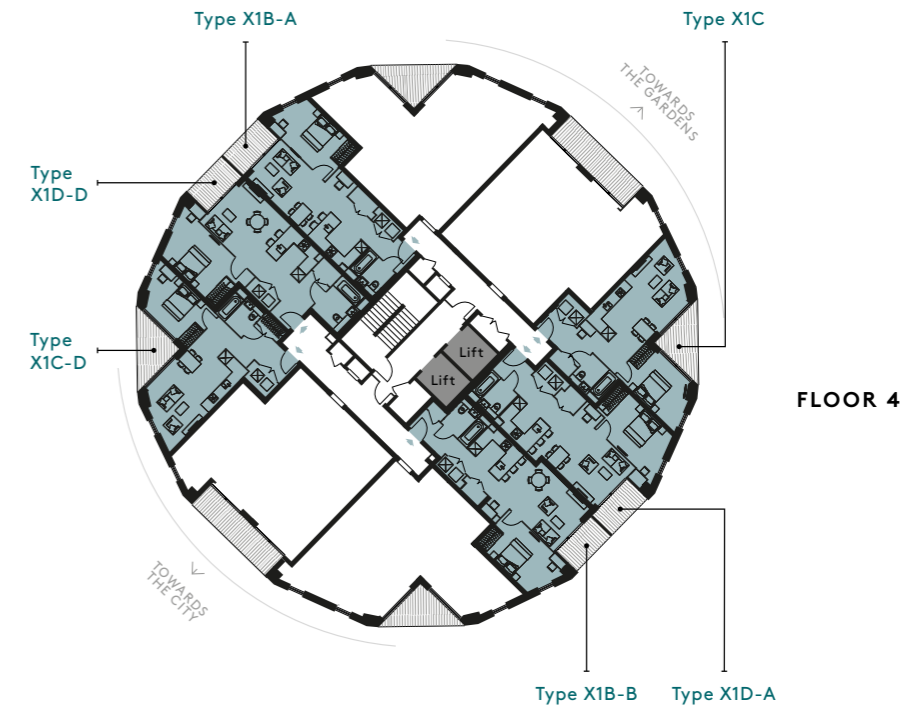
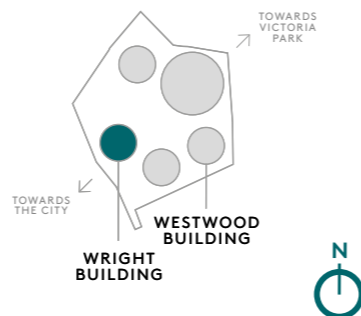
- W: Wardrobe
- ST: Storage
- UC: Utility Cupboard

58.1sqm - (625.3sqft)

Living/Dining	4.99m x 3.40m	16' 5" x 11' 2"
Kitchen	3.15m x 2.18m	10' 4" x 7' 2"
Bedroom	4.89m x 2.94m	16' 1" x 9' 8"
Balcony	1.64m x 3.03m	5' 5" x 9' 11"

Floorplans shown for Regent's View are for approximate measurements only. Exact layouts and sizes may vary. All measurements may vary within a tolerance of 5%. The dimensions are not intended to be used for carpet sizes, appliance sizes or items of furniture.

LOCATION



FLOORS 5-7

FLOORS 8-10



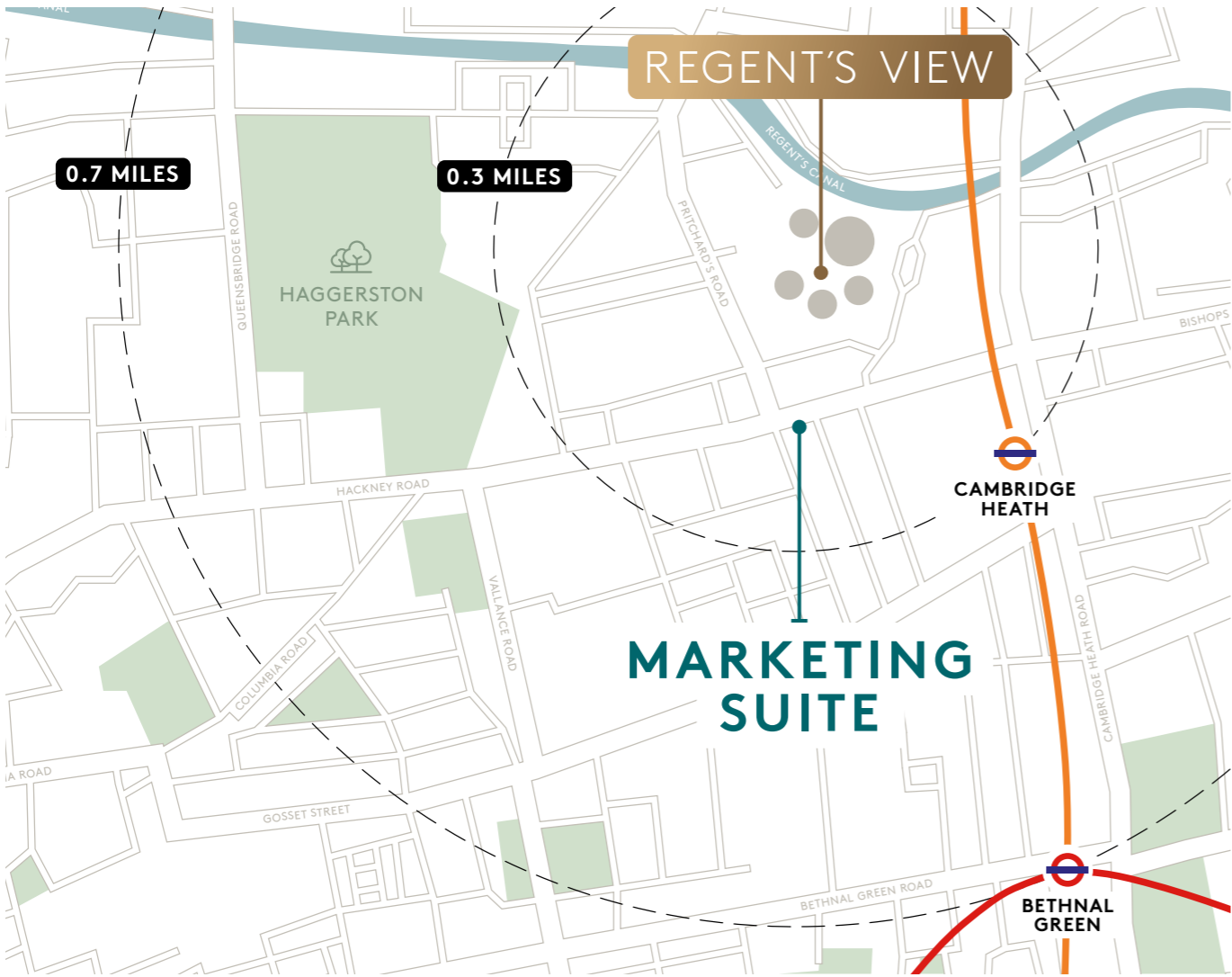
SALES & MARKETING CONTACT

Marketing Suite
430 Hackney Road London E2 6QL
Open 7 days a week

Call
+44(0)20 3834 0914

Email
sales@regentsview.uk

Web
regentsview.uk



The information in this document is indicative and is intended to act as a guide only as to the finished product. Accordingly, due to St William's policy of continuous improvement, the finished product may vary from the information provided. It may not be possible to provide the exact materials as referred to in the brochure. In such cases a suitable alternative will be provided. St William reserves the right to make these changes as required. These particulars should not be relied upon as statements of fact or representations and applicants must satisfy themselves by inspection or otherwise as to their correctness. This information does not constitute a contract or warranty. The dimensions given on plans are subject to minor variations and are not intended to be used for carpet sizes, appliance sizes or items of furniture. Regent's View is a marketing name and will not necessarily form part of the approved postal address. Applicants are advised to contact St William to ascertain the availability of any particular property. W454/44CA/0824

REGENTSVIEW.UK